

# Chem-Impex International, Inc.

---

Tel: (630) 766-2112

E-mail: sales@chemimpex.com

Shipping and Correspondence:

935 Dillon Drive

Wood Dale, IL 60191

Fax: (630) 766-2218

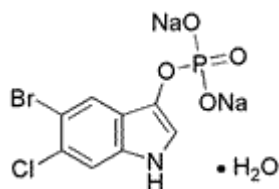
Web site: www.chemimpex.com

Manufacturing site:

825 Dillon Drive

Wood Dale, IL 60191

---



## Product Specifications

Catalogue Number	21010
Product	<b>5-Bromo-6-chloro-3-indoxyl phosphate disodium salt monohydrate</b> Magenta(tm)-phosphate disodium salt monohydrate
CAS Number	404366-59-2
Molecular Formula	C <sub>8</sub> H <sub>4</sub> BrClNO <sub>4</sub> P•2Na•H <sub>2</sub> O
Molecular Weight	388.45
Appearance	Off-white powder
Solubility	Clear and practically colorless (1% solution in water)
Water Content (Karl Fisher)	≤ 10%
Purity by HPLC	≥ 97%
Storage	Store at 0 - 8 °C

---

**For Laboratory Use Only**