

Chem-Impex International, Inc.

Tel: (630) 766-2112

E-mail: sales@chemimpex.com

Shipping and Correspondence:

935 Dillon Drive

Wood Dale, IL 60191

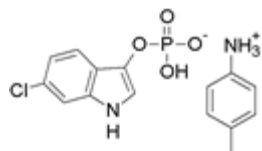
Fax: (630) 766-2218

Web site: www.chemimpex.com

Manufacturing site:

825 Dillon Drive

Wood Dale, IL 60191



Product Specifications

Catalogue Number 20930
Product **6-Chloro-3-indolyl phosphate *p*-toluidine salt**

6-Chloro-3-indoxyl phosphate *p*-toluidine salt

Salmon(tm)phosphate *p*-toluidine salt

CAS Number 159954-33-3
Molecular Formula C₈H₇ClNO₄P•C₇H₉N
Molecular Weight 354.73

Appearance White to off-white crystalline powder
Solubility Colorless to almost colorless (C=1% in methanol)
Turbidity ≤ 4 NTU (C=1% in methanol)
Water Content (Karl Fisher) ≤ 1%
Infrared Spectrum Conforms to structure
Purity by HPLC ≥ 98%
Storage Store at 0-8°C

For Laboratory Use Only