

Chem-Impex International, Inc.

Tel: (630) 766-2112

E-mail: sales@chemimpex.com

Shipping and Correspondence:

935 Dillon Drive

Wood Dale, IL 60191

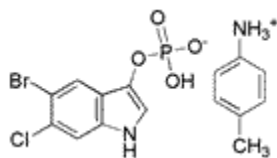
Fax: (630) 766-2218

Web site: www.chemimpex.com

Manufacturing site:

825 Dillon Drive

Wood Dale, IL 60191



Product Specifications

Catalogue Number	20916
Product	5-Bromo-6-chloro-3-indolyl phosphate p-toluidine salt Magenta(tm)phosphate <i>p</i> -toluidine salt
CAS Number	6769-80-8
Molecular Formula	C ₈ H ₆ BrClNO ₄ P•C ₇ H ₉ N
Molecular Weight	433.63
<hr/>	
Appearance	Off-white to light gray powder
Solubility	Clear solution (5% DMF)
Water Content (Karl Fisher)	≤ 0.5%
Purity by HPLC	≥ 95%
Storage	Store at 0-8°C

For Laboratory Use Only