

# Chem-Impex International, Inc.

---

**Tel:** (630) 766-2112

**E-mail:** sales@chemimpex.com

**Shipping and Correspondence:**

935 Dillon Drive

Wood Dale, IL 60191

**Fax:** (630) 766-2218

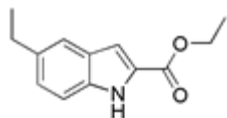
**Web site:** www.chemimpex.com

**Manufacturing site:**

825 Dillon Drive

Wood Dale, IL 60191

---



## Product Specifications

**Catalogue Number** 20888

**Product**

**2-Carbethoxy-5-ethylindole**

5-Ethylindole-2-carboxylic acid ethyl ester

Ethyl 5-ethyl-1*H*-indole-2-carboxylate

**CAS Number** 37033-94-6

**Molecular Formula** C<sub>13</sub>H<sub>15</sub>NO<sub>2</sub>

**Molecular Weight** 217.27

---

**Appearance** Off-white to yellow crystalline powder

**Turbidity** ≤ 2 NTU (0.5% in Ethanol)

**Melting Point** 101-107 °C

**Water Content (Karl Fisher)** ≤ 1%

**TLC System** Toluene/Acetone (5:1); 100 mg in 3 mL acetone; UV 254 nm

**Infrared Spectrum** Conforms to structure

**Purity by GC** ≥ 99%

**Storage** Store at 0-8 °C

**For Laboratory Use Only**