

Chem-Impex International, Inc.

Tel: (630) 766-2112

E-mail: sales@chemimpex.com

Shipping and Correspondence:

935 Dillon Drive

Wood Dale, IL 60191

Fax: (630) 766-2218

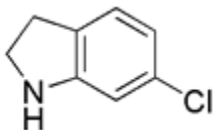
Web site: www.chemimpex.com

Manufacturing site:

825 Dillon Drive

Wood Dale, IL 60191

Product Specifications



Catalogue Number 20514

Product **6-Chloro-2,3-dihydro-1H-indole hydrochloride**

6-Chloroindoline hydrochloride

CAS Number 89978-84-7

Molecular Formula C₈H₈ClN·HCl

Molecular Weight 190.11

Appearance White powder

¹H NMR Conforms to structure

Assay ≥ 97%

Storage Store at 0-8 °C

For Laboratory Use Only