

Chem-Impex International, Inc.

Tel: (630) 766-2112

E-mail: sales@chemimpex.com

Shipping and Correspondence:

935 Dillon Drive

Wood Dale, IL 60191

Fax: (630) 766-2218

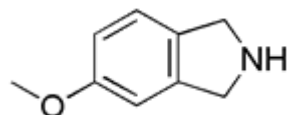
Web site: www.chemimpex.com

Manufacturing site:

825 Dillon Drive

Wood Dale, IL 60191

Product Specifications



Catalogue Number 20412

Product **5-Methoxy-2,3-dihydro-1H-isoindole**

5-Methoxyisoindoline

CAS Number 127168-88-1

Molecular Formula C₉H₁₁NO

Molecular Weight 149.19

Appearance White powder

¹H NMR Conforms to structure

Purity by HPLC ≥ 99%

Storage Store at 0-8°C

For Laboratory Use Only