

Chem-Impex International, Inc.

Tel: (630) 766-2112

E-mail: sales@chemimpex.com

Shipping and Correspondence:

935 Dillon Drive

Wood Dale, IL 60191

Fax: (630) 766-2218

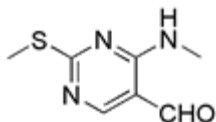
Web site: www.chemimpex.com

Manufacturing site:

825 Dillon Drive

Wood Dale, IL 60191

Product Specifications



Catalogue Number	20314
Product	4-Methylamino-2-methylsulfanyl-pyrimidine-5-carbaldehyde 7-Fluoro-1H-indole
CAS Number	185040-32-8
Molecular Formula	C ₇ H ₉ N ₃ OS
Molecular Weight	183.23
Appearance	Grey solid
¹H NMR	Conforms to structure
Purity by HPLC	≥ 97%
Storage	Store at 0-8°C

For Laboratory Use Only