

Chem-Impex International, Inc.

Tel: (630) 766-2112

E-mail: sales@chemimpex.com

Shipping and Correspondence:

935 Dillon Drive

Wood Dale, IL 60191

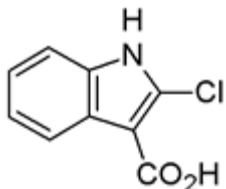
Fax: (630) 766-2218

Web site: www.chemimpex.com

Manufacturing site:

825 Dillon Drive

Wood Dale, IL 60191



Product Specifications

Catalogue Number	20005
Product	2-Chloro-1H-indole-3-carboxylic acid
CAS Number	54778-20-0
Molecular Formula	C ₉ H ₆ ClNO ₂
Molecular Weight	195.6
<hr/>	
Appearance	Off-white solid
¹H NMR	Conforms to structure
Assay	≥ 96%
Storage	Store at 0-8 °C

For Laboratory Use Only