

Chem-Impex International, Inc.

Tel: (630) 766-2112

E-mail: sales@chemimpex.com

Shipping and Correspondence:

935 Dillon Drive

Wood Dale, IL 60191

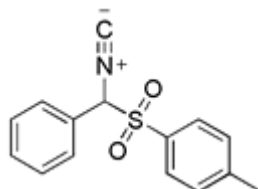
Fax: (630) 766-2218

Web site: www.chemimpex.com

Manufacturing site:

825 Dillon Drive

Wood Dale, IL 60191



Product Specifications

Catalogue Number 19670

Product

(1-Phenyl-1-tosyl)methyl isocyanide

1-([(Isocyano)(phenyl)methyl]sulphonyl)-4-methylbenzene

α -Tosylbenzyl isocyanide

CAS Number 36635-66-2

Molecular Formula C₁₅H₁₃NO₂S

Molecular Weight 271.34

Appearance Grey solid

¹H NMR Conforms to structure

Purity \geq 97% (NMR)

Storage Store at 0-8 °C

For Laboratory Use Only