

# Chem-Impex International, Inc.

---

**Tel:** (630) 766-2112

**E-mail:** sales@chemimpex.com

**Shipping and Correspondence:**

935 Dillon Drive

Wood Dale, IL 60191

**Fax:** (630) 766-2218

**Web site:** www.chemimpex.com

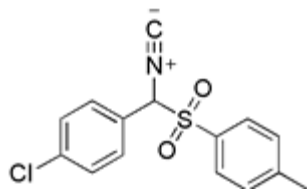
**Manufacturing site:**

825 Dillon Drive

Wood Dale, IL 60191

---

## Product Specifications



**Catalogue Number** 19668

**Product**  **$\alpha$ -Tosyl-(4-chlorobenzyl)isocyanide**

[1-(4-Chlorophenyl)-1-tosyl]methyl isocyanide

**CAS Number** 918892-30-5

**Molecular Formula** C<sub>15</sub>H<sub>12</sub>ClNO<sub>2</sub>S

**Molecular Weight** 305.78

---

**Appearance** Sandy solid

**Purity by HPLC**  $\geq$  95%

**Storage** Store at 0-8°C

**For Laboratory Use Only**