

Chem-Impex International, Inc.

Tel: (630) 766-2112

E-mail: sales@chemimpex.com

Shipping and Correspondence:

935 Dillon Drive

Wood Dale, IL 60191

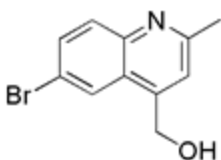
Fax: (630) 766-2218

Web site: www.chemimpex.com

Manufacturing site:

825 Dillon Drive

Wood Dale, IL 60191



Product Specifications

Catalogue Number	19605
Product	(6-Bromo-2-methyl-quinolin-4-yl)methanol
CAS Number	885279-63-0
Molecular Formula	C ₁₁ H ₁₀ BrNO
Molecular Weight	252.11

Appearance	Off-white solid
¹H NMR	Conforms to structure
Assay	≥ 96%
Storage	Store at 0-8°C

For Laboratory Use Only