

Chem-Impex International, Inc.

Tel: (630) 766-2112

E-mail: sales@chemimpex.com

Shipping and Correspondence:

935 Dillon Drive

Wood Dale, IL 60191

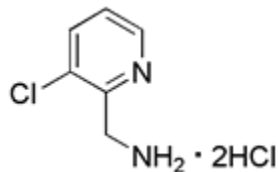
Fax: (630) 766-2218

Web site: www.chemimpex.com

Manufacturing site:

825 Dillon Drive

Wood Dale, IL 60191



Product Specifications

Catalogue Number	19564
Product	(3-Chloro-pyridin-2-yl)methylamine dihydrochloride
CAS Number	500305-98-6
Molecular Formula	$\text{C}_6\text{H}_7\text{ClN}_2 \cdot 2\text{HCl}$
Molecular Weight	215.51

Appearance	Yellow solid
^1H NMR	Conforms to structure
Assay	$\geq 99\%$
Storage	Store at 0-8 °C

For Laboratory Use Only