

Chem-Impex International, Inc.

Tel: (630) 766-2112

E-mail: sales@chemimpex.com

Shipping and Correspondence:

935 Dillon Drive

Wood Dale, IL 60191

Fax: (630) 766-2218

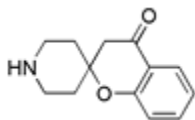
Web site: www.chemimpex.com

Manufacturing site:

825 Dillon Drive

Wood Dale, IL 60191

Product Specifications



Catalogue Number	19509
Product	Spiro[Chromene-2,4'-piperidin]-4(3H)-one hydrochloride
CAS Number	159635-39-9
Molecular Formula	C ₁₃ H ₁₅ NO ₂ •HCl
Molecular Weight	253.73

Appearance	White to slight grey crystalline powder
Melting Point	236-240 °C
Water Content (Karl Fisher)	≤ 0.1%
¹H NMR	Conforms to structure
LCMS	Conforms to structure
Purity by HPLC	≥ 99%
Storage	Store at 0-8 °C

For Laboratory Use Only