

Chem-Impex International, Inc.

Tel: (630) 766-2112

E-mail: sales@chemimpex.com

Shipping and Correspondence:

935 Dillon Drive

Wood Dale, IL 60191

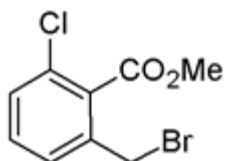
Fax: (630) 766-2218

Web site: www.chemimpex.com

Manufacturing site:

825 Dillon Drive

Wood Dale, IL 60191



Product Specifications

Catalogue Number	19434
Product	Methyl 2-bromomethyl-6-chlorobenzoate
CAS Number	482578-63-2
Molecular Formula	C ₉ H ₈ BrClO ₂
Molecular Weight	263.52
<hr/>	
Appearance	Oil
¹H NMR	Conforms to structure
Purity	≥ 96% (NMR)
Storage	Store at 0-8 °C

For Laboratory Use Only