

Chem-Impex International, Inc.

Tel: (630) 766-2112

E-mail: sales@chemimpex.com

Shipping and Correspondence:

935 Dillon Drive

Wood Dale, IL 60191

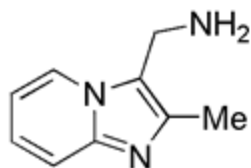
Fax: (630) 766-2218

Web site: www.chemimpex.com

Manufacturing site:

825 Dillon Drive

Wood Dale, IL 60191



Product Specifications

Catalogue Number	19313
Product	(2-Methyl-imidazo[1,2-a]pyridin-3-yl) methylamine
CAS Number	34164-91-5
Molecular Formula	C ₉ H ₁₁ N ₃
Molecular Weight	161.21

Appearance	Light yellow crystals
Melting Point	61-67 °C
Analysis by Mass Spectra	Conforms to structure
¹³C NMR	Conforms to structure
¹H NMR	Conforms to structure
LCMS	Conforms to structure
Purity	≥ 96% (NMR)
Storage	Store at 0-8 °C

For Laboratory Use Only