

Chem-Impex International, Inc.

Tel: (630) 766-2112

E-mail: sales@chemimpex.com

Shipping and Correspondence:

935 Dillon Drive

Wood Dale, IL 60191

Fax: (630) 766-2218

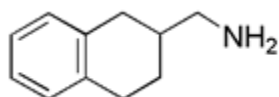
Web site: www.chemimpex.com

Manufacturing site:

825 Dillon Drive

Wood Dale, IL 60191

Product Specifications



Catalogue Number	19302
Product	(1,2,3,4-Tetrahydronaphthalen-2-yl) methylamine hydrochloride
CAS Number	136759-34-7
Molecular Formula	C ₁₁ H ₁₅ N•HCl
Molecular Weight	197.75
<hr/>	
Appearance	White powder
¹H NMR	Conforms to structure
Assay	≥ 96%
Storage	Store at 0-8 °C

For Laboratory Use Only