

Chem-Impex International, Inc.

Tel: (630) 766-2112

E-mail: sales@chemimpex.com

Shipping and Correspondence:

935 Dillon Drive

Wood Dale, IL 60191

Fax: (630) 766-2218

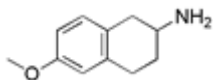
Web site: www.chemimpex.com

Manufacturing site:

825 Dillon Drive

Wood Dale, IL 60191

Product Specifications



Catalogue Number	19216
Product	6-Methoxy-1,2,3,4-tetrahydronaphthalen-2-ylamine
CAS Number	81861-30-5
Molecular Formula	C ₁₁ H ₁₅ NO
Molecular Weight	177.25
<hr/>	
Appearance	White solid
¹H NMR	Conforms to structure
Assay	≥ 96%
Storage	Store at 0-8 °C

For Laboratory Use Only