

# Chem-Impex International, Inc.

---

**Tel:** (630) 766-2112

**E-mail:** sales@chemimpex.com

**Shipping and Correspondence:**

935 Dillon Drive

Wood Dale, IL 60191

**Fax:** (630) 766-2218

**Web site:** www.chemimpex.com

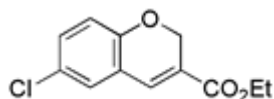
**Manufacturing site:**

825 Dillon Drive

Wood Dale, IL 60191

---

## Product Specifications



<b>Catalogue Number</b>	19201
<b>Product</b>	<b>6-Chloro-2H-chromene-3-carboxylic acid ethyl ester</b> Ethyl 6-chloro-2H-chromene-3-carboxylate
<b>CAS Number</b>	66670-54-0
<b>Molecular Formula</b>	C <sub>12</sub> H <sub>11</sub> ClO <sub>3</sub>
<b>Molecular Weight</b>	238.67
<hr/>	
<b>Appearance</b>	White crystalline powder
<b>Melting Point</b>	113-119 °C
<b><sup>1</sup>H NMR</b>	Conforms to structure
<b>Purity by HPLC</b>	≥ 94%
<b>Storage</b>	Store at 0-8 °C

**For Laboratory Use Only**