

Chem-Impex International, Inc.

Tel: (630) 766-2112

E-mail: sales@chemimpex.com

Shipping and Correspondence:

935 Dillon Drive

Wood Dale, IL 60191

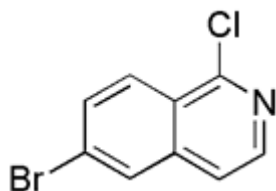
Fax: (630) 766-2218

Web site: www.chemimpex.com

Manufacturing site:

825 Dillon Drive

Wood Dale, IL 60191



Product Specifications

Catalogue Number	19176
Product	6-Bromo-1-chloro-isoquinoline
CAS Number	205055-63-6
Molecular Formula	C ₉ H ₅ BrClN
Molecular Weight	242.5
Appearance	Light yellow solid
¹ H NMR	Conforms to structure
Purity by HPLC	≥ 97%
Storage	Store at 0-8°C

For Laboratory Use Only