

Chem-Impex International, Inc.

Tel: (630) 766-2112

E-mail: sales@chemimpex.com

Shipping and Correspondence:

935 Dillon Drive

Wood Dale, IL 60191

Fax: (630) 766-2218

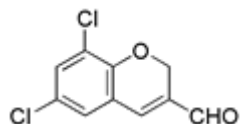
Web site: www.chemimpex.com

Manufacturing site:

825 Dillon Drive

Wood Dale, IL 60191

Product Specifications



Catalogue Number	19164
Product	6,8-Dichloro-2H-chromene-3-carbaldehyde
CAS Number	126350-18-3
Molecular Formula	C ₁₀ H ₆ Cl ₂ O ₂
Molecular Weight	229.06
<hr/>	
Appearance	Yellow powder
Melting Point	128-132 °C
Analysis by Mass Spectra	Conforms to standard
¹H NMR	Conforms to structure
Purity by HPLC	≥ 99%
Storage	Store at 0-8 °C

For Laboratory Use Only