

Chem-Impex International, Inc.

Tel: (630) 766-2112

E-mail: sales@chemimpex.com

Shipping and Correspondence:

935 Dillon Drive

Wood Dale, IL 60191

Fax: (630) 766-2218

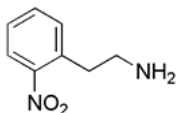
Web site: www.chemimpex.com

Manufacturing site:

825 Dillon Drive

Wood Dale, IL 60191

Product Specifications



Catalogue Number	18757
Product	2-Nitrophenethylamine 2-(2-Nitrophenyl)ethanamine
CAS Number	33100-15-1
Molecular Formula	C ₈ H ₁₀ N ₂ O ₂
Molecular Weight	166.18

Appearance	Brown liquid
¹H NMR	Conforms to structure
Purity	≥ 97% (NMR)
Storage	Store at 0-8 °C

For Laboratory Use Only