

Chem-Impex International, Inc.

Tel: (630) 766-2112

E-mail: sales@chemimpex.com

Shipping and Correspondence:

935 Dillon Drive

Wood Dale, IL 60191

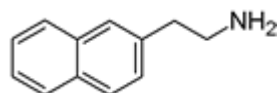
Fax: (630) 766-2218

Web site: www.chemimpex.com

Manufacturing site:

825 Dillon Drive

Wood Dale, IL 60191



Product Specifications

Catalogue Number	18755
Product	2-Naphthalen-2-yl-ethylamine hydrochloride
CAS Number	2017-68-7
Molecular Formula	C ₁₂ H ₁₃ N • HCl
Molecular Weight	207.70

Warnings	<i>Moisture sensitive!</i>
Appearance	Beige crystalline powder
Elemental Analysis (Theory)	Chlorine content : 17.07 ± 0.5%
Water Content (Karl Fisher)	≤ 0.2%
¹H NMR	Conforms to structure
Purity	≥ 95% (NMR)
Storage	Store at 0 - 8 °C

For Laboratory Use Only