

Chem-Impex International, Inc.

Tel: (630) 766-2112

E-mail: sales@chemimpex.com

Shipping and Correspondence:

935 Dillon Drive

Wood Dale, IL 60191

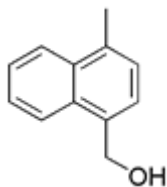
Fax: (630) 766-2218

Web site: www.chemimpex.com

Manufacturing site:

825 Dillon Drive

Wood Dale, IL 60191



Product Specifications

Catalogue Number	18300
Product	(1-Methylnaphthalen-4-yl)methanol
CAS Number	57322-44-8
Molecular Formula	C ₁₂ H ₁₂ O
Molecular Weight	172.23

Appearance	White solid
Purity by HPLC	≥ 96%
Storage	Store at 0-8 °C

For Laboratory Use Only