

Chem-Impex International, Inc.

Tel: (630) 766-2112

E-mail: sales@chemimpex.com

Shipping and Correspondence:

935 Dillon Drive

Wood Dale, IL 60191

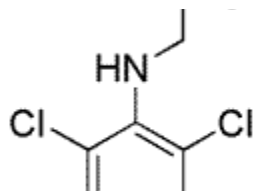
Fax: (630) 766-2218

Web site: www.chemimpex.com

Manufacturing site:

825 Dillon Drive

Wood Dale, IL 60191



Product Specifications

Catalogue Number	18234
Product	2,6-Dichloro-N-ethylbenzenamine
	2,6-Dichloro-N-ethylaniline
	(2,6-Dichlorophenyl)ethylamine
CAS Number	885280-60-4
Molecular Formula	C ₈ H ₉ Cl ₂ N
Molecular Weight	190.07
Appearance	Yellow viscous liquid
Water Content (Karl Fisher)	≤ 0.1%
¹H NMR	Conforms to structure
Purity	≥ 99% (NMR)
Storage	Store at 0-8 °C

For Laboratory Use Only