

Chem-Impex International, Inc.

Tel: (630) 766-2112

E-mail: sales@chemimpex.com

Shipping and Correspondence:

935 Dillon Drive

Wood Dale, IL 60191

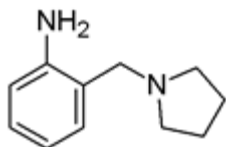
Fax: (630) 766-2218

Web site: www.chemimpex.com

Manufacturing site:

825 Dillon Drive

Wood Dale, IL 60191



Product Specifications

Catalogue Number	18000
Product	2-Pyrrolidin-1-ylmethyl-phenylamine 2-Pyrrolidin-1-ylmethyl-aniline
CAS Number	55727-59-8
Molecular Formula	C ₁₁ H ₁₆ N ₂
Molecular Weight	176.26
Appearance	Dark brown powder
¹H NMR	Conforms to structure
Purity	≥ 95% (NMR)
Storage	Store at 0-8°C

For Laboratory Use Only