

# Chem-Impex International, Inc.

---

**Tel:** (630) 766-2112

**E-mail:** sales@chemimpex.com

**Shipping and Correspondence:**

935 Dillon Drive

Wood Dale, IL 60191

**Fax:** (630) 766-2218

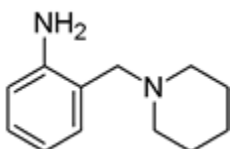
**Web site:** www.chemimpex.com

**Manufacturing site:**

825 Dillon Drive

Wood Dale, IL 60191

---



## Product Specifications

|                          |  |
|--------------------------|--|
| <b>Catalogue Number</b>  | 17998  |
| <b>Product</b>           | <b>2-Piperidin-1-ylmethyl-aniline</b>          |
|                          | 2-Piperidin-1-ylmethyl-phenylamine             |
| <b>CAS Number</b>        | 19577-83-4                                     |
| <b>Molecular Formula</b> | C <sub>12</sub> H <sub>18</sub> N <sub>2</sub> |
| <b>Molecular Weight</b>  | 190.29   |
| <hr/>                    |  |
| <b>Appearance</b>        | Brown liquid                                   |
| <b>Boiling point</b>     | 98 - 100 °C at 0.5 mm Hg                       |
| <b><sup>1</sup>H NMR</b> | Conforms to structure                          |
| <b>LCMS</b>              | ≥ 95%  |
| <b>Purity</b>            | ≥ 95%  |
| <b>Storage</b>           | Store at 0 - 8 °C                              |

**For Laboratory Use Only**