

Chem-Impex International, Inc.

Tel: (630) 766-2112

E-mail: sales@chemimpex.com

Shipping and Correspondence:

935 Dillon Drive

Wood Dale, IL 60191

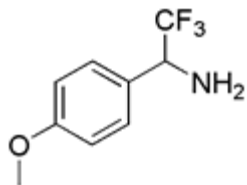
Fax: (630) 766-2218

Web site: www.chemimpex.com

Manufacturing site:

825 Dillon Drive

Wood Dale, IL 60191



Product Specifications

Catalogue Number	17958
Product	2,2,2-Trifluoro-1-(4-methoxyphenyl) ethylamine hydrochloride
CAS Number	65686-77-3
Molecular Formula	C ₉ H ₁₀ F ₃ NO·HCl
Molecular Weight	241.68

Appearance	White solid
¹ H NMR	Conforms to structure
Assay	≥ 99%
Storage	Store at 0-8°C

For Laboratory Use Only