

Chem-Impex International, Inc.

Tel: (630) 766-2112

E-mail: sales@chemimpex.com

Shipping and Correspondence:

935 Dillon Drive

Wood Dale, IL 60191

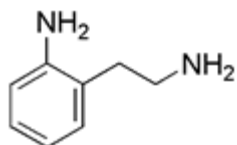
Fax: (630) 766-2218

Web site: www.chemimpex.com

Manufacturing site:

825 Dillon Drive

Wood Dale, IL 60191



Product Specifications

Catalogue Number	17930
Product	2-(2-Aminoethyl)phenylamine
	2-(2-Aminoethyl)-aniline
CAS Number	48108-93-6
Molecular Formula	C ₈ H ₁₂ N ₂
Molecular Weight	136.2
<hr/>	
Appearance	Colorless to light yellow liquid
Water Content (Karl Fisher)	≤ 0.5%
¹H NMR	Conforms to structure
Assay	≥ 99%
Storage	Store at 0-8 °C

For Laboratory Use Only