

Chem-Impex International, Inc.

Tel: (630) 766-2112

E-mail: sales@chemimpex.com

Shipping and Correspondence:

935 Dillon Drive

Wood Dale, IL 60191

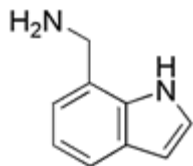
Fax: (630) 766-2218

Web site: www.chemimpex.com

Manufacturing site:

825 Dillon Drive

Wood Dale, IL 60191



Product Specifications

Catalogue Number	17916
Product	(1H-Indol-7-yl)methylamine oxalate 7-(Aminomethyl)indole oxalate
CAS Number	408356-52-5 (net)
Molecular Formula	C ₉ H ₁₀ N ₂ ·C ₂ H ₂ O ₄
Molecular Weight	236.22
Appearance	Pink solid
¹H NMR	Conforms to structure
Assay	≥ 96%
Storage	Store at 0-8°C

For Laboratory Use Only