

# Chem-Impex International, Inc.

---

**Tel:** (630) 766-2112

**E-mail:** sales@chemimpex.com

**Shipping and Correspondence:**

935 Dillon Drive

Wood Dale, IL 60191

**Fax:** (630) 766-2218

**Web site:** www.chemimpex.com

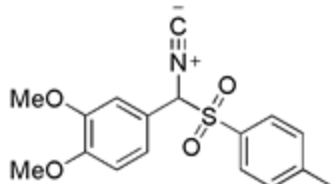
**Manufacturing site:**

825 Dillon Drive

Wood Dale, IL 60191

---

## Product Specifications



**Catalogue Number** 17874

**Product**

**4-[Isocyano-(toluene-4-sulfonyl)methyl]-1,2-dimethoxy-benzene**

1,2-Dimethoxy-4-[isocyano(4-methylphenyl)sulphonyl]methylbenzene

1-(3,4-Dimethoxyphenyl)-1-tosylmethyl isocyanide

**CAS Number** 943614-50-4

**Molecular Formula** C<sub>17</sub>H<sub>17</sub>NO<sub>4</sub>S

---

**Appearance** Brown solid

**Purity by HPLC** ≥ 95%

**Storage** Store at 0-8°C

**For Laboratory Use Only**