

Chem-Impex International, Inc.

Tel: (630) 766-2112

E-mail: sales@chemimpex.com

Shipping and Correspondence:

935 Dillon Drive

Wood Dale, IL 60191

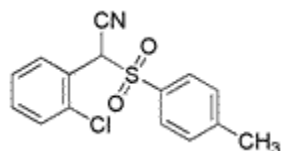
Fax: (630) 766-2218

Web site: www.chemimpex.com

Manufacturing site:

825 Dillon Drive

Wood Dale, IL 60191



Product Specifications

Catalogue Number	17859
Product	2-Chloro-1-[isocyano-(toluene-4-sulfonyl)methyl]benzene [1-(2-Chlorophenyl)-1-tosyl]methyl isocyanide
CAS Number	1029104-34-4
Molecular Formula	C ₁₅ H ₁₂ ClNO ₂ S
Molecular Weight	305.78
Appearance	White crystals
Solubility	Soluble in chlorinated hydrocarbons and methanol, insoluble in water and hexane
Melting Point	103-108 °C
pH	6 (Water suspension, non-soluble)
¹H NMR	Conforms to structure
Purity by GC	≥ 98%
Storage	Store at 0-8°C

For Laboratory Use Only