

# Chem-Impex International, Inc.

---

**Tel:** (630) 766-2112

**E-mail:** sales@chemimpex.com

**Shipping and Correspondence:**

935 Dillon Drive

Wood Dale, IL 60191

**Fax:** (630) 766-2218

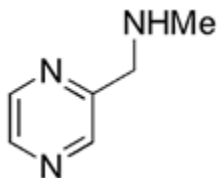
**Web site:** www.chemimpex.com

**Manufacturing site:**

825 Dillon Drive

Wood Dale, IL 60191

---



## Product Specifications

<b>Catalogue Number</b>	17803
<b>Product</b>	<b>(Methylpyrazin-2-yl)methyl amine</b> <i>N</i> -Methyl-1-(2-pyrazinyl)methanamine
<b>CAS Number</b>	120739-79-9
<b>Molecular Formula</b>	C <sub>6</sub> H <sub>9</sub> N <sub>3</sub>
<b>Molecular Weight</b>	123.16
<hr/>	
<b>Appearance</b>	Light yellow clear liquid
<b>Water Content (Karl Fisher)</b>	≤ 0.5%
<b><sup>1</sup>H NMR</b>	Conforms to structure
<b>Purity</b>	≥ 95% (NMR)
<b>Storage</b>	Store at ≤ -4 °C under Nitrogen

**For Laboratory Use Only**