

Chem-Impex International, Inc.

Tel: (630) 766-2112

E-mail: sales@chemimpex.com

Shipping and Correspondence:

935 Dillon Drive

Wood Dale, IL 60191

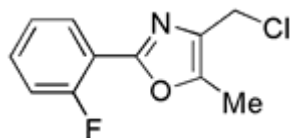
Fax: (630) 766-2218

Web site: www.chemimpex.com

Manufacturing site:

825 Dillon Drive

Wood Dale, IL 60191



Product Specifications

Catalogue Number	17706
Product	4-Chloromethyl-2-(2-fluorophenyl)-5-methyl-oxazole 4-(Chloromethyl)-2-(2-fluorophenyl)-5-methyl-1,3-oxazole
CAS Number	671215-76-2
Molecular Formula	C ₁₁ H ₉ ClFNO
Molecular Weight	225.65
<hr/>	
Appearance	Pale yellow crystalline powder
Melting Point	68-72 °C
Water Content (Karl Fisher)	≤ 0.5%
Analysis by Mass Spectra	Conforms to standard
¹H NMR	Conforms to structure
Purity by HPLC	≥ 97%
Storage	Store at 0-8 °C

For Laboratory Use Only