

Chem-Impex International, Inc.

Tel: (630) 766-2112

E-mail: sales@chemimpex.com

Shipping and Correspondence:

935 Dillon Drive

Wood Dale, IL 60191

Fax: (630) 766-2218

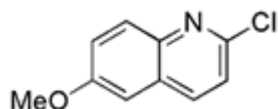
Web site: www.chemimpex.com

Manufacturing site:

825 Dillon Drive

Wood Dale, IL 60191

Product Specifications



Catalogue Number	17639
Product	2-Chloro-6-methoxy-quinoline
	6-Methoxy-2-chloro-quinoline
CAS Number	13676-02-3
Molecular Formula	C ₁₀ H ₈ ClNO
Molecular Weight	193.63
<hr/>	
Appearance	Grey to light brown powder
Melting Point	106-111 °C
¹H NMR	Conforms to structure
Purity by HPLC	≥ 95%
Storage	Store at 0-8°C

For Laboratory Use Only