

# Chem-Impex International, Inc.

---

**Tel:** (630) 766-2112

**E-mail:** sales@chemimpex.com

**Shipping and Correspondence:**

935 Dillon Drive

Wood Dale, IL 60191

**Fax:** (630) 766-2218

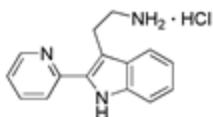
**Web site:** www.chemimpex.com

**Manufacturing site:**

825 Dillon Drive

Wood Dale, IL 60191

---



## Product Specifications

<b>Catalogue Number</b>	17619
<b>Product</b>	<b>2-(2-Pyridin-2-yl-1H-indol-3-yl)ethanamine monohydrochloride</b>
<b>CAS Number</b>	374064-08-1
<b>Molecular Formula</b>	C <sub>15</sub> H <sub>15</sub> N <sub>3</sub> •HCl
<b>Molecular Weight</b>	273.77

---

<b>Appearance</b>	Yellow powder
<b>Melting Point</b>	231-237 °C
<b>Purity</b>	≥ 95% (LC)
<b>Storage</b>	Store at 0-8°C

**For Laboratory Use Only**