

Chem-Impex International, Inc.

Tel: (630) 766-2112

E-mail: sales@chemimpex.com

Shipping and Correspondence:

935 Dillon Drive

Wood Dale, IL 60191

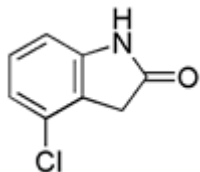
Fax: (630) 766-2218

Web site: www.chemimpex.com

Manufacturing site:

825 Dillon Drive

Wood Dale, IL 60191



Product Specifications

Catalogue Number	17482
Product	4-Chloro-1,3-dihydroindol-2-one 4-Chloro-2-oxindole
CAS Number	20870-77-3
Molecular Formula	C ₈ H ₆ ClNO
Molecular Weight	167.59
Appearance	Off-white to yellow powder
¹H NMR	Conforms to structure
Purity by HPLC	≥ 98%
Storage	Store at 0-8 °C

For Laboratory Use Only