

# Chem-Impex International, Inc.

---

**Tel:** (630) 766-2112

**E-mail:** sales@chemimpex.com

**Shipping and Correspondence:**

935 Dillon Drive

Wood Dale, IL 60191

**Fax:** (630) 766-2218

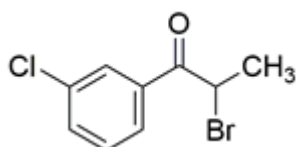
**Web site:** www.chemimpex.com

**Manufacturing site:**

825 Dillon Drive

Wood Dale, IL 60191

---



## Product Specifications

<b>Catalogue Number</b>	17443
<b>Product</b>	<b>3'-Chloro-2-bromopropiophenone</b> 2-Bromo-1-(3-chlorophenyl)propan-1-one 2-Bromo-3'-chloropropiophenone
<b>CAS Number</b>	34911-51-8
<b>Molecular Formula</b>	C <sub>9</sub> H <sub>8</sub> BrClO
<b>Molecular Weight</b>	247.52

---

<b>Appearance</b>	Colorless to yellow liquid
<b>Density</b>	1.470 - 1.550
<b>Water Content (Karl Fisher)</b>	≤ 1%
<b>Purity by GC</b>	≥ 98%
<b>Storage</b>	Store at 0 - 8 °C

**For Laboratory Use Only**