

Chem-Impex International, Inc.

Tel: (630) 766-2112

E-mail: sales@chemimpex.com

Shipping and Correspondence:

935 Dillon Drive

Wood Dale, IL 60191

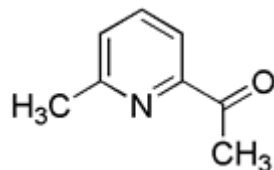
Fax: (630) 766-2218

Web site: www.chemimpex.com

Manufacturing site:

825 Dillon Drive

Wood Dale, IL 60191



Product Specifications

Catalogue Number	17414
Product	2-Acetyl-6-methylpyridine 1-(6-Methyl-pyridin-2-yl)ethanone
CAS Number	6940-57-4
Molecular Formula	C ₈ H ₉ NO
Molecular Weight	135.17

Appearance	White to pale yellow solid
Water Content (Karl Fisher)	≤ 0.5%
¹H NMR	Conforms to structure
Purity by GC	≥ 99%
Storage	Store at 0 - 8 °C

For Laboratory Use Only