

Chem-Impex International, Inc.

Tel: (630) 766-2112

E-mail: sales@chemimpex.com

Shipping and Correspondence:

935 Dillon Drive

Wood Dale, IL 60191

Fax: (630) 766-2218

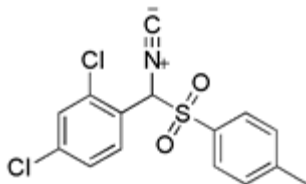
Web site: www.chemimpex.com

Manufacturing site:

825 Dillon Drive

Wood Dale, IL 60191

Product Specifications



Catalogue Number 17408

Product

2,4-Dichloro-1-[isocyano-(toluene-4-sulfonyl)methyl]benzene

(2,4-Dimethylphenyl)(isocyano)methyl 4-methylphenyl sulfone

1-(2,4-Dichlorophenyl)-1-tosylmethyl isocyanide

CAS Number 952727-77-4

Molecular Formula C₁₅H₁₁Cl₂NO₂S

Molecular Weight 340.23

Appearance Colorless to yellow powder

¹H NMR Conforms to structure

Purity ≥ 95% (NMR)

Storage Store at 0-8°C

For Laboratory Use Only