

Chem-Impex International, Inc.

Tel: (630) 766-2112

E-mail: sales@chemimpex.com

Shipping and Correspondence:

935 Dillon Drive

Wood Dale, IL 60191

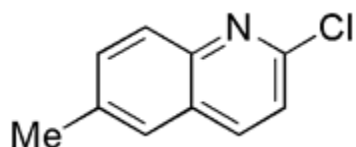
Fax: (630) 766-2218

Web site: www.chemimpex.com

Manufacturing site:

825 Dillon Drive

Wood Dale, IL 60191



Product Specifications

Catalogue Number	17333
Product	2-Chloro-6-methyl-quinoline
CAS Number	4295-11-8
Molecular Formula	C ₁₀ H ₈ ClN
Molecular Weight	177.63

Appearance	Light brown to grey crystalline powder
¹H NMR	Conforms to structure
Purity	≥ 98%
Storage	Store at 0 - 8 °C

For Laboratory Use Only