

Chem-Impex International, Inc.

Tel: (630) 766-2112

E-mail: sales@chemimpex.com

Shipping and Correspondence:

935 Dillon Drive

Wood Dale, IL 60191

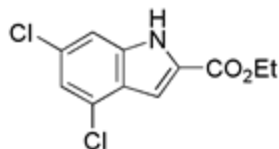
Fax: (630) 766-2218

Web site: www.chemimpex.com

Manufacturing site:

825 Dillon Drive

Wood Dale, IL 60191



Product Specifications

Catalogue Number	17303
Product	4,6-Dichloro-1H-indole-2-carboxylic acid ethyl ester Ethyl 4,6-dichloro-1H-indole-2-carboxylate
CAS Number	53995-82-7
Molecular Formula	C ₁₁ H ₉ Cl ₂ NO ₂
Molecular Weight	258.1
<hr/>	
Appearance	Pale yellow solid
Melting Point	181-191 °C
Loss on Drying	≤ 1%
Purity by HPLC	≥ 98%
Storage	Store at 0-8°C

For Laboratory Use Only