

# Chem-Impex International, Inc.

---

**Tel:** (630) 766-2112

**E-mail:** sales@chemimpex.com

**Shipping and Correspondence:**

935 Dillon Drive

Wood Dale, IL 60191

**Fax:** (630) 766-2218

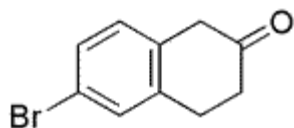
**Web site:** www.chemimpex.com

**Manufacturing site:**

825 Dillon Drive

Wood Dale, IL 60191

---



## Product Specifications

<b>Catalogue Number</b>	17157
<b>Product</b>	<b>6-Bromo-2-tetralone</b>
	6-Bromo-3,4-dihydro-1 <i>H</i> -naphthalen-2-one
<b>CAS Number</b>	4133-35-1
<b>Molecular Formula</b>	C <sub>10</sub> H <sub>9</sub> BrO
<b>Molecular Weight</b>	225.08

---

<b>Appearance</b>	Off-white to pale yellow tan colored crystalline powder
<b>Solubility</b>	Soluble in Chloroform and Methanol
<b><sup>1</sup>H NMR</b>	Conforms to structure
<b>Purity by GC</b>	≥ 97%
<b>Storage</b>	Store at 0-8°C

**For Laboratory Use Only**