

Chem-Impex International, Inc.

Tel: (630) 766-2112

E-mail: sales@chemimpex.com

Shipping and Correspondence:

935 Dillon Drive

Wood Dale, IL 60191

Fax: (630) 766-2218

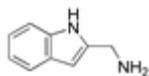
Web site: www.chemimpex.com

Manufacturing site:

825 Dillon Drive

Wood Dale, IL 60191

Product Specifications



Catalogue Number	17139
Product	(1H-Indol-2-ylmethyl)amine
CAS Number	21109-25-1
Molecular Formula	C ₉ H ₁₀ N ₂
Molecular Weight	146.19

Appearance	Light brown solid
¹³C NMR	Conforms to structure
¹H NMR	Conforms to structure
Purity	≥ 95% (NMR)
Storage	Store at 0-8°C

For Laboratory Use Only