

# *Chem-Impex International, Inc.*

---

**Tel:** (630) 766-2112

**E-mail:** sales@chemimpex.com

**Shipping and Correspondence:**

935 Dillon Drive

Wood Dale, IL 60191

**Fax:** (630) 766-2218

**Web site:** www.chemimpex.com

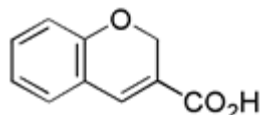
**Manufacturing site:**

825 Dillon Drive

Wood Dale, IL 60191

---

## *Product Specifications*



<b>Catalogue Number</b>	17110
<b>Product</b>	<b>2H-Chromene-3-carboxylic acid</b>
<b>CAS Number</b>	22649-28-1
<b>Molecular Formula</b>	C <sub>10</sub> H <sub>8</sub> O <sub>3</sub>
<b>Molecular Weight</b>	176.17

---

<b>Appearance</b>	Light green crystal powder
<b>Analysis by Mass Spectra</b>	Conforms to standard
<b><sup>1</sup>H NMR</b>	Conforms to structure
<b>Purity by HPLC</b>	≥ 99%
<b>Storage</b>	Store at 0-8 °C

**For Laboratory Use Only**