

Chem-Impex International, Inc.

Tel: (630) 766-2112

E-mail: sales@chemimpex.com

Shipping and Correspondence:

935 Dillon Drive

Wood Dale, IL 60191

Fax: (630) 766-2218

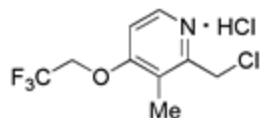
Web site: www.chemimpex.com

Manufacturing site:

825 Dillon Drive

Wood Dale, IL 60191

Product Specifications



| | |
|--------------------------|--|
| Catalogue Number | 17056 |
| Product | 2-Chloromethyl-3-methyl-4-(2,2,2-trifluoroethoxy)pyridine hydrochloride |
| CAS Number | 127337-60-4 |
| Molecular Formula | C ₉ H ₉ ClF ₃ NO•HCl |
| Molecular Weight | 276.08 |

| | |
|------------------------------------|---------------------------|
| Appearance | White to off-white powder |
| Water Content (Karl Fisher) | < 0.5% |
| ¹H NMR | Conforms to structure |
| Assay | ≥ 99% |
| Storage | Store at RT |

For Laboratory Use Only