

Chem-Impex International, Inc.

Tel: (630) 766-2112

E-mail: sales@chemimpex.com

Shipping and Correspondence:

935 Dillon Drive

Wood Dale, IL 60191

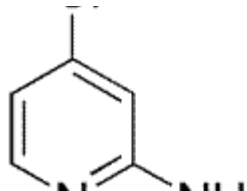
Fax: (630) 766-2218

Web site: www.chemimpex.com

Manufacturing site:

825 Dillon Drive

Wood Dale, IL 60191



Product Specifications

Catalogue Number	17039
Product	2-Amino-4-chloropyridine 4-Chloro-2-pyridinamine 4-Chloro-pyridine-2-ylamine
CAS Number	19798-80-2
Molecular Formula	C ₅ H ₅ ClN ₂
Molecular Weight	128.56

Appearance	White to light brown crystalline powder
Melting Point	129 - 133 °C
Water Content (Karl Fisher)	≤ 0.5%
Purity by HPLC	≥ 99%
Storage	Store at 0 - 8 °C

For Laboratory Use Only