

Chem-Impex International, Inc.

Tel: (630) 766-2112

E-mail: sales@chemimpex.com

Shipping and Correspondence:

935 Dillon Drive

Wood Dale, IL 60191

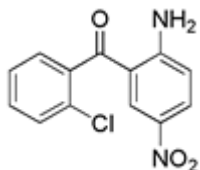
Fax: (630) 766-2218

Web site: www.chemimpex.com

Manufacturing site:

825 Dillon Drive

Wood Dale, IL 60191



Product Specifications

Catalogue Number	17028
Product	2-Amino-2'-chloro-5-nitrobenzophenone (2-Amino-5-nitrophenyl)-(2-chlorophenyl)methanone 2-Amino-5-nitro-2'-chlorobenzophenone
CAS Number	2011-66-7
Molecular Formula	C ₁₃ H ₉ ClN ₂ O ₃
Molecular Weight	276.68
<hr/>	
Appearance	Yellow crystalline powder
Melting Point	117-121 °C
Loss on Drying	≤ 0.5%
Purity by HPLC	≥ 99%
Storage	Store at 0-8 °C

For Laboratory Use Only