

Chem-Impex International, Inc.

Tel: (630) 766-2112

E-mail: sales@chemimpex.com

Shipping and Correspondence:

935 Dillon Drive

Wood Dale, IL 60191

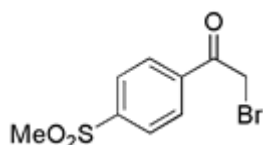
Fax: (630) 766-2218

Web site: www.chemimpex.com

Manufacturing site:

825 Dillon Drive

Wood Dale, IL 60191



Product Specifications

Catalogue Number	17018
Product	2-Bromo-1-[4-(methylsulfonyl)phenyl]-1-ethanone 2-Bromo-4'-(methylsulfonyl)acetophenone 4-(Methylsulphonyl)phenacyl bromide
CAS Number	50413-24-6
Molecular Formula	C ₉ H ₉ BrO ₃ S
Molecular Weight	277.14
Appearance	White to light yellow crystalline powder
Melting Point	123-131 °C
Purity by GC	≥ 99%
Storage	Store at 0-8°C

For Laboratory Use Only