

Chem-Impex International, Inc.

Tel: (630) 766-2112

E-mail: sales@chemimpex.com

Shipping and Correspondence:

935 Dillon Drive

Wood Dale, IL 60191

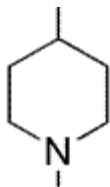
Fax: (630) 766-2218

Web site: www.chemimpex.com

Manufacturing site:

825 Dillon Drive

Wood Dale, IL 60191



Product Specifications

Catalogue Number	16986
Product	4-Amino-1-methylpiperidine
	1-Methyl-piperidin-4-ylamine
CAS Number	41838-46-4
Molecular Formula	C ₆ H ₁₄ N ₂
Molecular Weight	114.19

Appearance	Colorless or pale yellow color liquid
Solubility	Soluble in alcohol
Water Content (Karl Fisher)	≤ 0.5%
Purity by GC	≥ 99%
Storage	Store at 0 - 8 °C

For Laboratory Use Only