

Chem-Impex International, Inc.

Tel: (630) 766-2112

E-mail: sales@chemimpex.com

Shipping and Correspondence:

935 Dillon Drive

Wood Dale, IL 60191

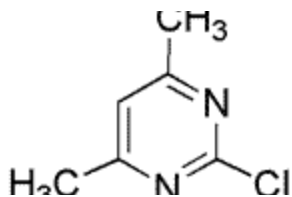
Fax: (630) 766-2218

Web site: www.chemimpex.com

Manufacturing site:

825 Dillon Drive

Wood Dale, IL 60191



Product Specifications

Catalogue Number 16985

Product **2-Chloro-4,6-dimethylpyrimidine**

CAS Number 4472-44-0

Molecular Formula C₆H₇ClN₂

Molecular Weight 142.59

Appearance White to light yellow crystals

Melting Point 35-39 °C

Purity by GC ≥ 99%

Storage Store at 0-8 °C

For Laboratory Use Only